

HP-UX

- description : HP-UX
- author :
- email : dhan@repia.com
- lastupdate : 2020-06-01

PATH

```
$> export SHLIB_PATH= :${SHLIB_PATH}
```

PATH (ia64)

```
$> export LD_LIBRARY_PATH= :${LD_LIBRARY_PATH}
```

/usr/local/bin, /usr/local/lib
가

Agent

```
bash -> termcap -> gettext -> libiconv -> zlib -> gcc -> make -> m4
```

가
flex, bison, top, tar, wget, gnutils, gzip ... 가

```
$> swlist
```

```
#  
# Product(s) not contained in a Bundle:  
#
```

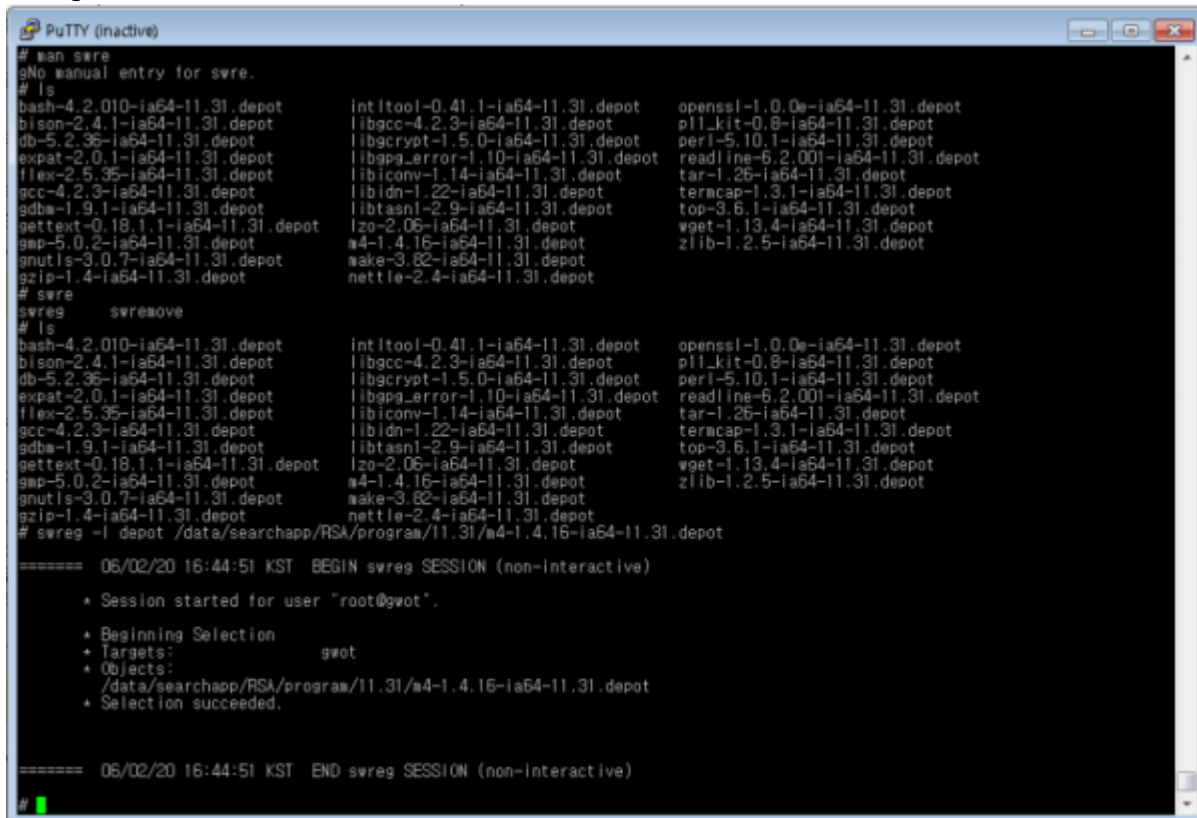
bash	4.2.010	bash
gcc	4.2.3	gcc
gettext	0.18.1.1	gettext
libiconv	1.14	libiconv
m4	1.4.16	m4

make	3.82	make
termcap	1.3.1	termcap
zlib	1.2.5	zlib

(root)

```
$> swreg -l depot /work/tmp/hpux_gnu/bash-3.2-hppa-11.11.depot //
$> swinstall -s /work/tmp/hpux_gnu/bash-3.2-hppa-11.11.depot //
!!
```

swreg



Library (space)

```

PuTTY (inactive)
Sec00Tools      B.01.04.10   Install-Time security infrastructure.
SecureShell     A.06.20.030  HP-UX Secure Shell
SerialSCSI-00  B.11.31.1303 PCI-X/PCI-E SerialSCSI
SWAssistant     C.02.95      HP-UX Software Assistant
SysFaultMgmt   C.07.13.09_01 HPUX System Fault Management
SysMgmtMin     B.11.31.1508 Minimum Software Deployment Tools
SysMgmtPlus    A.10.00.03_01 HP-UX SMH Supplemental Functionality
SysMgmtWeb     A.3.2.9      HP-UX Web Based System Management User Interfaces
TBIRD          A.2.0.0.24ar.00 Thunderbird for HP-UX
Tune-N-Tools   B.11.31.0909 Optimized Kernel Tunables and Tools for Database and Application Servers
USB-00         D.11.31.0909 Transition USB-00 Product
VirtualBase    B.06.30.05_00 Base Virtualization Software
WhiteListInf   A.01.03.00   HP-UX Whitelisting
hpuxss22Apache B.2.2.15.22  HP-UX Apache-based Web Server
hpuxss22Tomcat C.6.0.39.04  HP-UX Tomcat-based Servlet Engine
hpuxss22Webain A.1.070.13   HP-UX Webain-based Admin
hpuxssXsl      A.2.03       HPUX XML
perl           E.5.8.8.M    Perl Programming Language
scsiU320-00    B.11.31.1109 PCI-X SCSI U320:Supptd HW=A7173A/AB290A

# ls
bash-4.2.010-ia64-11.31.depopt    intltool-0.41.1-ia64-11.31.depopt    openssl-1.0.0e-ia64-11.31.depopt
bison-2.4.1-ia64-11.31.depopt     libbcc-4.2.3-ia64-11.31.depopt        p11_kit-0.8-ia64-11.31.depopt
db-5.2.36-ia64-11.31.depopt       libgcrypt-1.5.0-ia64-11.31.depopt     perl-5.10.1-ia64-11.31.depopt
expat-2.0.1-ia64-11.31.depopt     libgpg_error-1.10-ia64-11.31.depopt   readline-6.2.001-ia64-11.31.depopt
flex-2.5.35-ia64-11.31.depopt     libiconv-1.14-ia64-11.31.depopt      tar-1.26-ia64-11.31.depopt
gcc-4.2.3-ia64-11.31.depopt       libidn-1.22-ia64-11.31.depopt        termcap-1.3.1-ia64-11.31.depopt
gdbm-1.9.1-ia64-11.31.depopt       libtasn1-2.9-ia64-11.31.depopt       top-3.6.1-ia64-11.31.depopt
gettext-0.18.1.1-ia64-11.31.depopt lzo-2.06-ia64-11.31.depopt           wget-1.13.4-ia64-11.31.depopt
gmp-5.0.2-ia64-11.31.depopt       m4-1.4.16-ia64-11.31.depopt          zlib-1.2.5-ia64-11.31.depopt
gnutls-3.0.7-ia64-11.31.depopt    make-3.82-ia64-11.31.depopt
gzip-1.4-ia64-11.31.depopt        nettle-2.4-ia64-11.31.depopt

# pwd
/data/searchapp/PSA/program/11.31
# bash
sh: bash: not found.
# swinstall -s /data/searchapp/PSA/program/11.31/bash-4.2.010-ia64-11.31.depopt
NOTE: 소프트웨어가 지정되지 않았기 때문에 대화식 비가
호출되었습니다.

ERROR: 그래픽 사용자 인터페이스(GUI) 또는 터미널 사용자
인터페이스(TUI)를 시작할 수 없습니다. 이 명령을 실행하려면
DISPLAY를 설정하거나 LANG="" 또는 LANG=C로 지정하여 영어
버전의 TUI를 사용해야 합니다.

# export LANG=C
#

```

```

PuTTY (inactive)
gdbm-1.9.1-ia64-11.31.depopt    libtasn1-2.9-ia64-11.31.depopt    top-3.6.1-ia64-11.31.depopt
gettext-0.18.1.1-ia64-11.31.depopt lzo-2.06-ia64-11.31.depopt        wget-1.13.4-ia64-11.31.depopt
gmp-5.0.2-ia64-11.31.depopt     m4-1.4.16-ia64-11.31.depopt       zlib-1.2.5-ia64-11.31.depopt
gnutls-3.0.7-ia64-11.31.depopt  make-3.82-ia64-11.31.depopt
gzip-1.4-ia64-11.31.depopt     nettle-2.4-ia64-11.31.depopt

# pwd
/data/searchapp/PSA/program/11.31
# bash
sh: bash: not found.
# swinstall -s /data/searchapp/PSA/program/11.31/bash-4.2.010-ia64-11.31.depopt
NOTE: 소프트웨어가 지정되지 않았기 때문에 대화식 비가
호출되었습니다.

ERROR: 그래픽 사용자 인터페이스(GUI) 또는 터미널 사용자
인터페이스(TUI)를 시작할 수 없습니다. 이 명령을 실행하려면
DISPLAY를 설정하거나 LANG="" 또는 LANG=C로 지정하여 영어
버전의 TUI를 사용해야 합니다.

# export LANG=C
# swinstall -s /data/searchapp/PSA/program/11.31/bash-4.2.010-ia64-11.31.depopt
NOTE: The interactive UI was invoked, since no software was
specified.

Starting the terminal version of swinstall...

To move around in swinstall:
- use the "Tab" key to move between screen elements
- use the arrow keys to move within screen elements
- use "Ctrl-F" for context-sensitive help anywhere in swinstall

On screens with a menubar at the top like this:

-----
|File View Options Actions                               Help|
-----

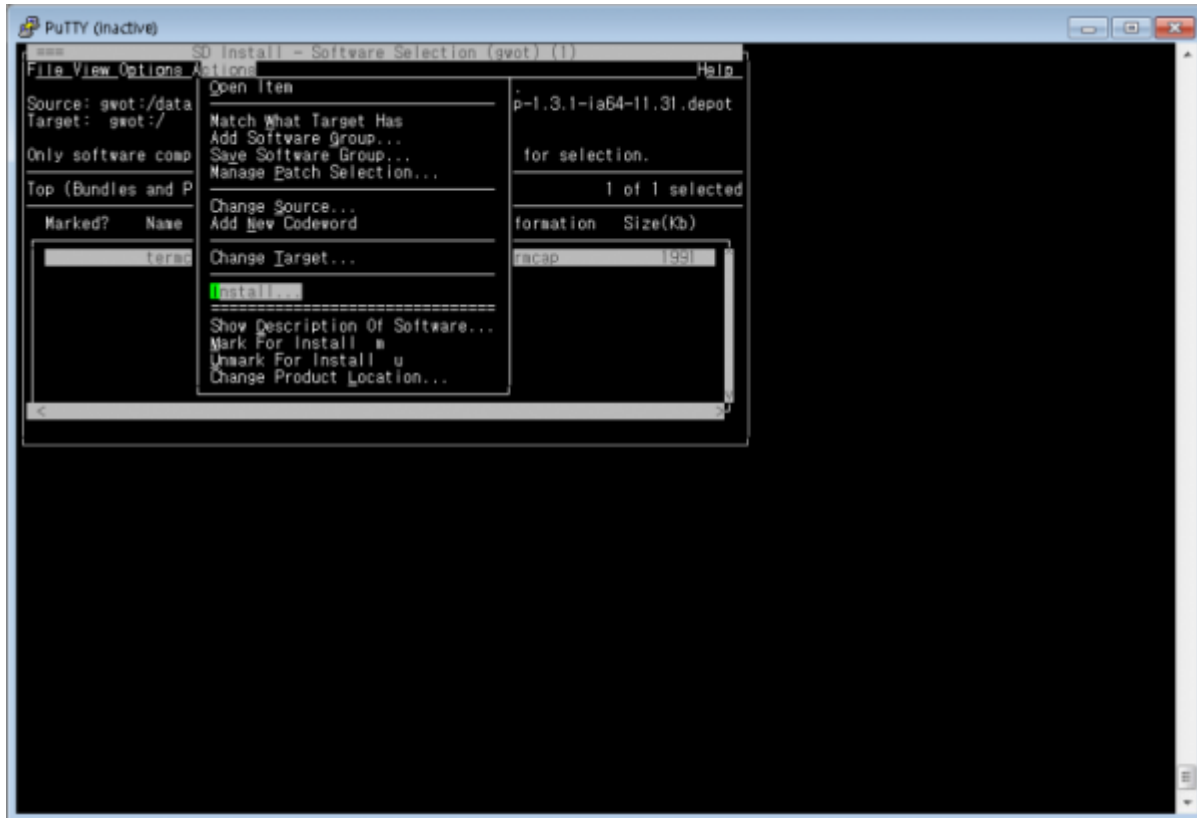
- use "Tab" to move from the list to the menubar
- use the arrow keys to move around
- use "Return" to pull down a menu or select a menu item
- use "Tab" to move from the menubar to the list without selecting a menu item
- use the spacebar to select an item in the list

On any screen, press "CTRL-K" for more information on how to use the keyboard.
Press "Return" to continue...

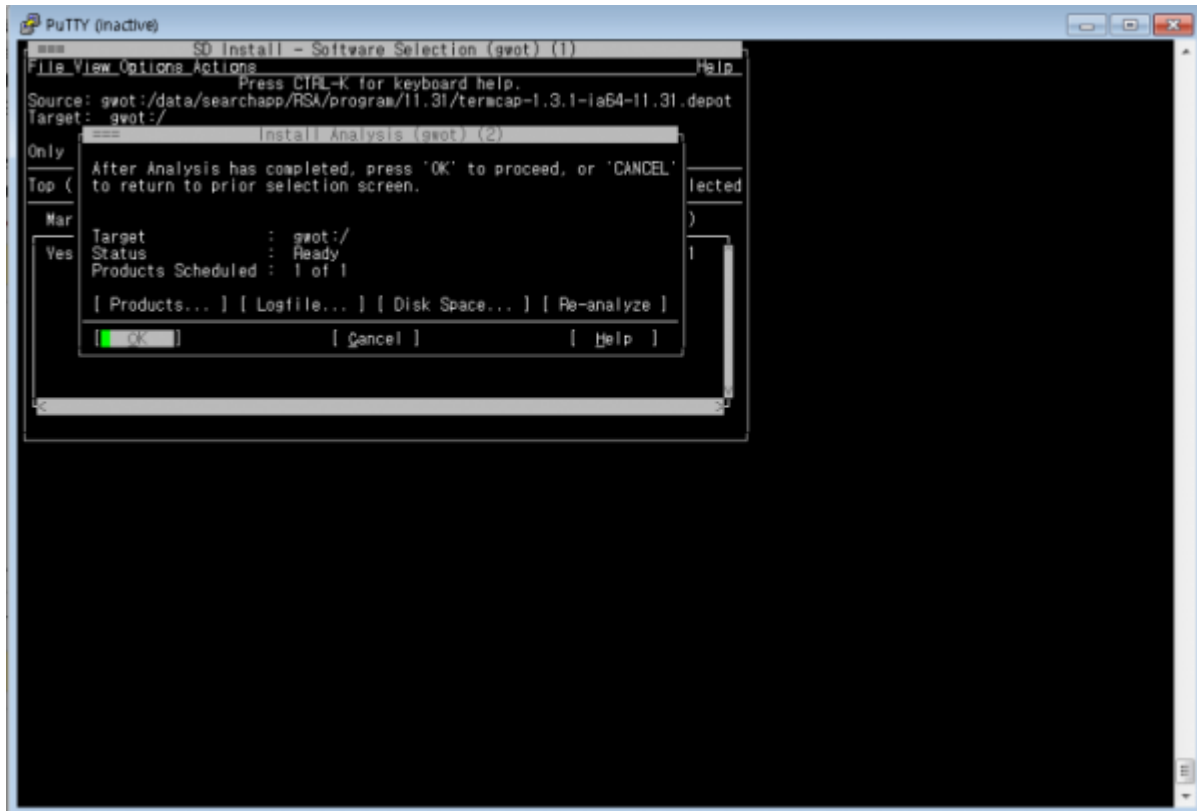
```

가 export LANG=C

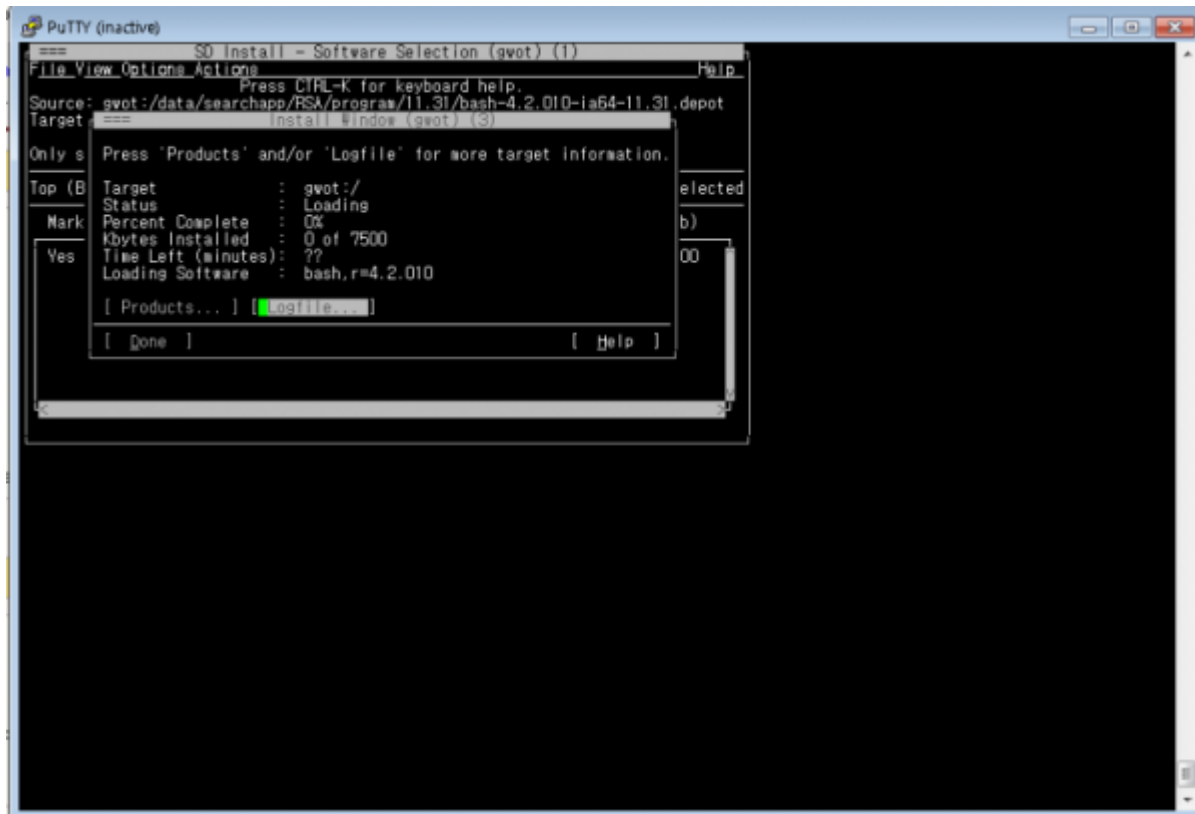
Actions > Install...



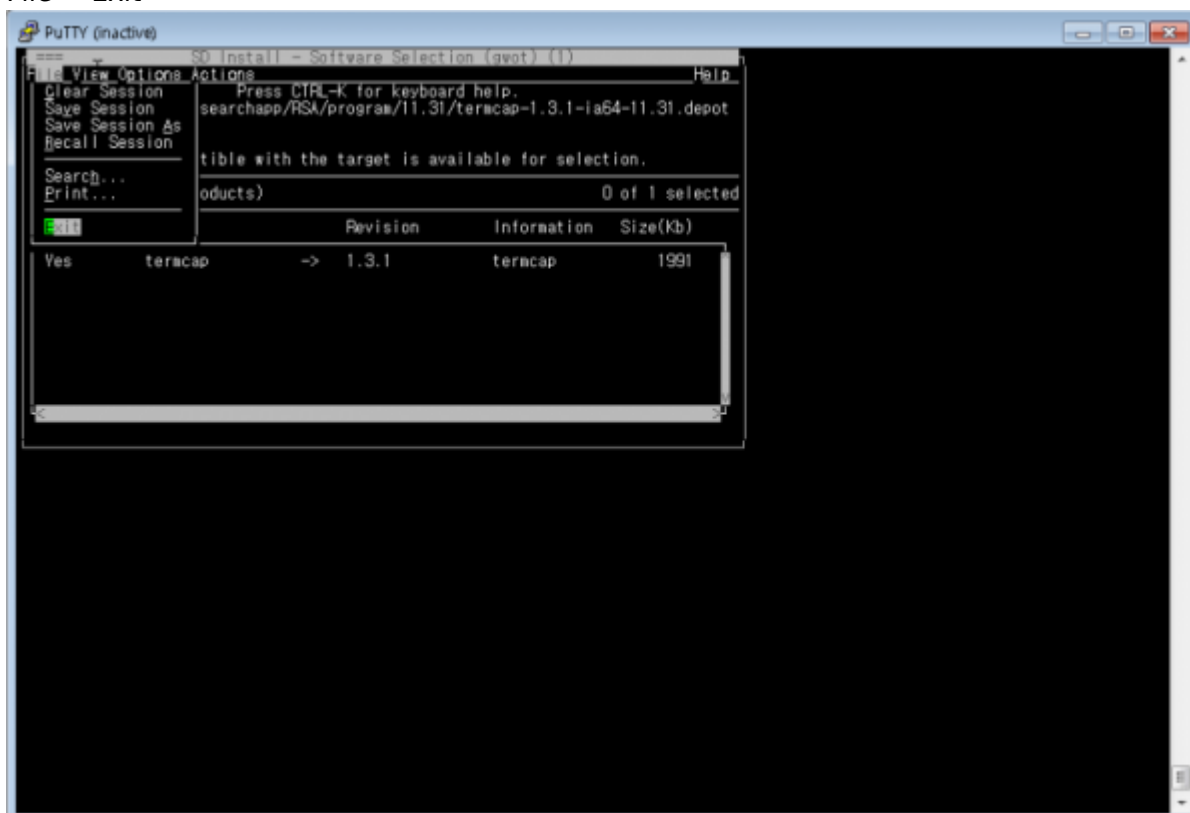
Ok



Done



File > Exit



(bash)

```
$> swremove bash
```

```
$> /sbin/init.d/swagentd stop/start  
or  
$> kill swinstall
```

, hpux

From:

<http://125.132.25.164/dokuwiki/> -
- 2023.12

Permanent link:

<http://125.132.25.164/dokuwiki/doku.php?id=wiki:os:hpux&rev=1591086483>

Last update: **2022/03/10 19:52**

