

(Eclipse)

- description :
- author :
- email : jhgong@repia.com
- lastupdate : 2020-01-31

eclipse.ini

```

openFile
--launcher.appendVmargs
-vm
C:/eGovFrameDev-3.9.0-64bit/jdk1.8.0_202/bin/javaw.exe
-vmargs
-Dfile.encoding=UTF-8
...
-Xms512m
-Xmx2048m

```

eclipse

1. Pathtool
2. Window > Preferences > General - Show heap status
3. Springloaded : [Hot Deploy](#)

javascript

Window > Preferences > General > Editors > File Associations

File types	Add
1. Define a New File Type	- File type .js - OK
2. .js	,
3. Associated editors content type)	Generic Text Editor (locked by'JavaScript Source File' Default - Apply and Close
4. javascript	, 가

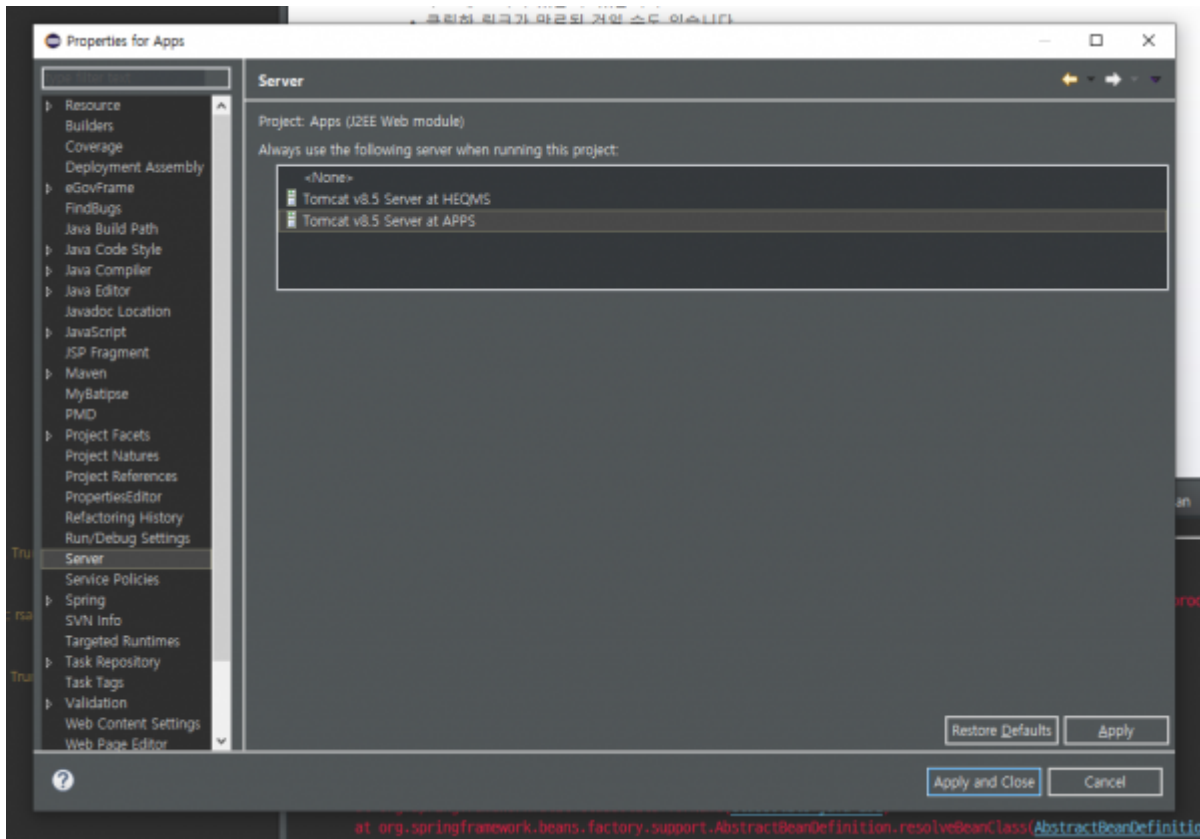
Ref Link : [\[eclipse\]](#) (js)

- * [Eclipse File Search](#)
- * [Eclipse Quick Search](#)
- * [Eclipse Label Decorations](#)

(Server)

Resin 4.0

Dynamic Web Project Run As → Run on Server Server
Project Mouse Right Click ⇒ Properties > Server → <None> Apply and Close
Server



python

- [eclipse python](#)
- [Django](#)

Help > About Eclipse Platform > Installation Details > Installed Software

- Eclipse Color Theme 1.0.0
 - Help > Install New Software - Available Software > Add - Add Repository
 - name : Eclipse Color Theme & Location: <http://eclipse-color-theme.github.io/update/>
 - [Top 12 Eclipse IDE Themes](#)
- Path Tools 1.0.64 ((2020) 가)
 - 가

```

1.
  ${ } \eclipse\plugins\PathTools_1.0.67.jar,
PathToolsRSE_1.0.64.jar, PathToolsSubclipse_1.0.67.jar
  ${ } \eclipse\plugins\
2.
  가
  ${
  } \eclipse\configuration\org.eclipse.equinox.simpleconfigurator\bundles.info
  가
#encoding=UTF-8
#version=1
PathTools,1.0.67,plugins/PathTools_1.0.67.jar,4,false
PathToolsRSE,1.0.64,plugins/PathToolsRSE_1.0.64.jar,4,false
PathToolsSubclipse,1.0.67,plugins/PathToolsSubclipse_1.0.67.jar,4,false

```

- Autodetect Encoding
- Remote System Explorer(SSh, Telnet, FTP and DStore protocols) 3.5.0
- eXERD : Install New Software, <http://exerd.com/update/3.x>
- Emmet(ex Zen-coding) : <http://download.emmet.io/eclipse/updates/>
 - Emmet
- [Grep Console](#)

,
 가 : Ctrl + Shift + _
 : Ctrl + Shift + {

[Top 30](#)
[\[eclipse\]\[TIP\]](#) !
 ()
 Java IDE Eclipse or Tip . ^^

Toggle Block Selection Mode (Alt + Shift + A)

Log

or ,

`\${ }/.metadata/.log .

LOGGER

Logger

```
//
private static final Logger Logger =
LoggerFactory.getLogger(Controller.class);

//
Logger.debug(" = [{}]", );
```

Logger

- 가
- Logger

- cdt
- Tomcat Port Error
- Export and Import
- front
- SVN Ignore
- Maven lombok
- Eclipse Decompiler
- git
- git Pull

Ref

- eclipse
- 가
- .properties
 - Properties Editor가 , Open With
- svn trunk
- Tomcat Hot Deploy

- 가 ()
- [eclipse validating / build](#)
- [Top 30 Eclipse Keyboard Shortcuts for Java Programmers](#)
- [SERIALVERSIONUID 가](#)
- [TIP](#)
- [[TIP](#)] : Toggle Block Selection Mode (Alt + Shift + A)
- [validation off](#)

Tip

- [Tips and tricks](#)
 - [Using the dark theme](#)
- [Zooming In and Out of Text with Eclipse](#)
- [*](#)
- 😊 [New](#)
- 😊 [Open Resource](#)
- 😊 [\[Eclipse_ \(tips\)\] Ctrl+Space ! Content Assist\(\)가](#)
- [!](#)
- [, ,](#)

Troubleshooting

[Eclipse] Errors running builder "Integrated External Tool Builder" on project

- error
- [⇒ properties\(\) ⇒ Builders builder .](#)
- [Eclipse Clean](#)
- [Java \(\)](#)
- [Any way to get IntelliJ-like autocompletion in Eclipse?](#)

[Errors] Default workspace is already in use. Do you want to choose another workspace?

- 1. [workspace > .metadata > .plugins > org.eclipse.e4.workbench > workbench.xmi](#)
 - [.](#)

- 1. workspace > .metadata > .lock

[eGov 3.10]

1. Window > Preferences > General > Editors > File Associations

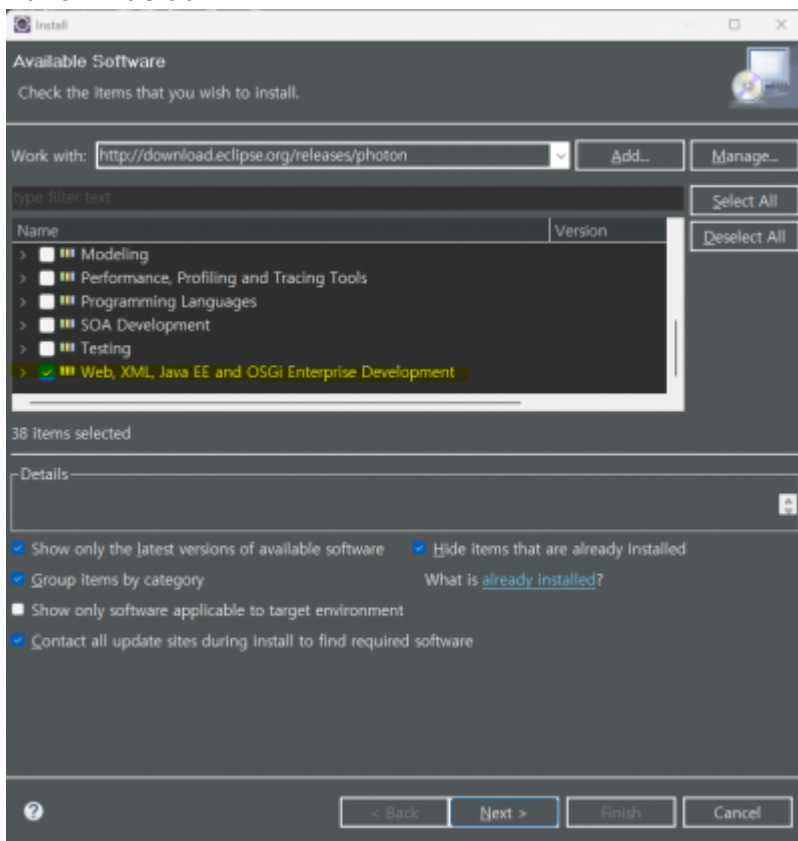
- 1. File types > Add > .js 가
- 2. Associated editors > Generic Text Editor > Default > Apply and Close

2. Help > Install New Software > Work with

- <http://download.eclipse.org/releases/photons>

- Web, XML, Java EE and OSGi Enterprise Development

- Window > Preferences > General > Editors > File Associations Associated editors - JavaScript Editor default



(2022.11.11.Fri - ocean)

Spring Tool Suite 4 (version: 4.16.1.RELEASE)
Mon by ocean)

(2023-02-20

Ref Link

Eclipse

Ref Link

- 1. [\[Eclipse\]workspace](#) (eclipse please choose another workspace as is currently in use)
- 2. [Workspace](#) - The default workspace is in use or cannot be create.

Eclipse springboot class"

"Error: Could not find or load main

- 1. [MAVEN Test](#)
- 2. [JRE System Library](#)

, , eclipse, , eleven, , , properties, , slaptear

From:

<http://125.132.25.164/dokuwiki/> -

- 2023.12

Permanent link:

<http://125.132.25.164/dokuwiki/doku.php?id=wiki:eclipse&rev=1676863482>

Last update: **2023/02/20 12:24**

