

# (Eclipse)

- description :
- author :
- email : [jhgong@repia.com](mailto:jhgong@repia.com)
- lastupdate : 2020-01-31

## eclipse.ini

```

openFile
--launcher.appendVmargs
-vm
C:/eGovFrameDev-3.9.0-64bit/jdk1.8.0_202/bin/javaw.exe
-vmargs
-Dfile.encoding=UTF-8
...
-Xms512m
-Xmx2048m

```

## eclipse

1. Pathtool
2. Window > Preferences > General - Show heap status
3. Springloaded : [Hot Deploy](#)

## javascript

Window > Preferences > General > Editors > File Associations

File types	Add
1. Define a New File Type	- File type <b>.js</b> - OK
2. <b>.js</b>	,
3. Associated editors content type)	Generic Text Editor (locked by'JavaScript Source File' Default - Apply and Close
4. javascript	, 가

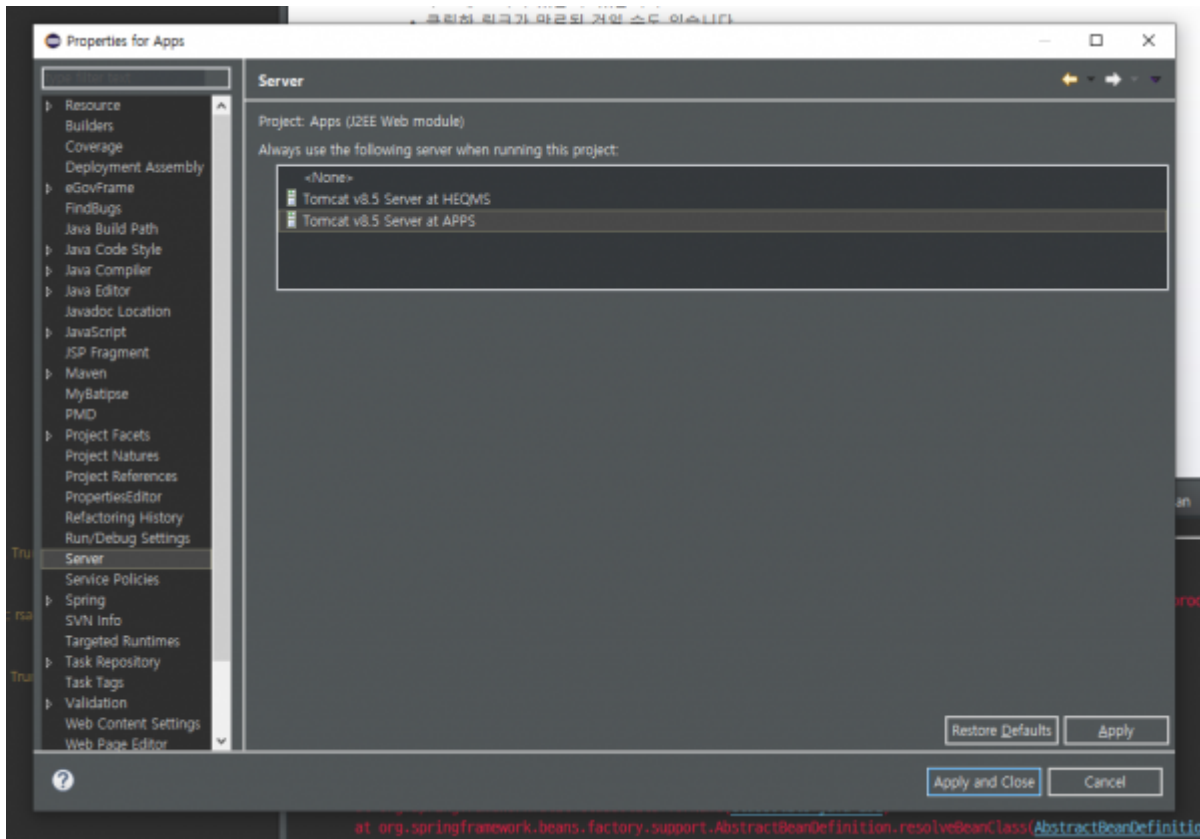
Ref Link : [\[eclipse\]](#) (js)

- \* [Eclipse File Search](#)
- \* [Eclipse Quick Search](#)
- \* [Eclipse Label Decorations](#)

## (Server)

### Resin 4.0

Dynamic Web Project      Run As → Run on Server      Server  
 Project      Mouse Right Click ⇒ Properties > Server → <None>      Apply and Close  
 Server



## python

- [eclipse python](#)
- [Django](#)

Help > About Eclipse Platform > Installation Details > Installed Software

- Eclipse Color Theme 1.0.0
  - Help > Install New Software - Available Software > Add - Add Repository
  - name : Eclipse Color Theme & Location: <http://eclipse-color-theme.github.io/update/>
  - [Top 12 Eclipse IDE Themes](#)
- Path Tools 1.0.64 ( (2020 ) 가 )
  - 가

```

1.
  ${ } \eclipse\plugins\PathTools_1.0.67.jar,
PathToolsRSE_1.0.64.jar, PathToolsSubclipse_1.0.67.jar
  ${ } \eclipse\plugins\
2.
  가
  ${
  } \eclipse\configuration\org.eclipse.equinox.simpleconfigurator\bundles.info
  가
#encoding=UTF-8
#version=1
PathTools,1.0.67,plugins/PathTools_1.0.67.jar,4,false
PathToolsRSE,1.0.64,plugins/PathToolsRSE_1.0.64.jar,4,false
PathToolsSubclipse,1.0.67,plugins/PathToolsSubclipse_1.0.67.jar,4,false

```

- Autodetect Encoding
- Remote System Explorer(SSH, Telnet, FTP and DStore protocols) 3.5.0
- eXERD : Install New Software, <http://exerd.com/update/3.x>
- Emmet(ex Zen-coding) : <http://download.emmet.io/eclipse/updates/>
  - Emmet
- [Grep Console](#)

,  
 가 : Ctrl + Shift + \_  
 : Ctrl + Shift + {

[Top 30](#)  
[\[eclipse\]\[TIP\]](#) !  
 ( )  
[Java IDE Eclipse](#) or [Tip](#) . ^^

Toggle Block Selection Mode (Alt + Shift + A)

# Log

or ,

`\${ }/metadata/.log .

# LOGGER

Logger

```
//
private static final Logger Logger =
LoggerFactory.getLogger(Controller.class);

//
Logger.debug(" = [{}]", );
```

Logger

- 가
- Logger

- cdt
- Tomcat Port Error
- Export and Import
- front
- SVN Ignore
- Maven lombok
- Eclipse Decompiler
- git
- git Pull

# Ref

- eclipse
- 가
- .properties
  - Properties Editor가 , Open With
- svn trunk
- Tomcat Hot Deploy

- 가 ( )
- [eclipse validating / build](#)
- [Top 30 Eclipse Keyboard Shortcuts for Java Programmers](#)
- [SERIALVERSIONUID 가](#)
- [TIP](#)
- [ [TIP](#) ] : Toggle Block Selection Mode (Alt + Shift + A)
- [validation off](#)

## Tip

- [Tips and tricks](#)
  - [Using the dark theme](#)
- [Zooming In and Out of Text with Eclipse](#)
- [\\*](#)
- 😊 [New](#)
- 😊 [Open Resource](#)
- 😊 [\[Eclipse\\_ \(tips\)\] Ctrl+Space ! Content Assist\( \)가](#)
- [!](#)
- [, ,](#)

## Troubleshooting

### [Eclipse] Errors running builder "Integrated External Tool Builder" on project

- error
- [⇒ properties\( \) ⇒ Builders builder .](#)
- [Eclipse Clean](#)
- [Java \( \)](#)
- [Any way to get IntelliJ-like autocompletion in Eclipse?](#)

### [Errors] Default workspace is already in use. Do you want to choose another workspace?

- 1. `workspace > .metadata > .plugins > org.eclipse.e4.workbench > workbench.xmi`
  - .

1. workspace > .metadata > .lock

### [eGov 3.10]

1. Window > Preferences > General > Editors > File Associations

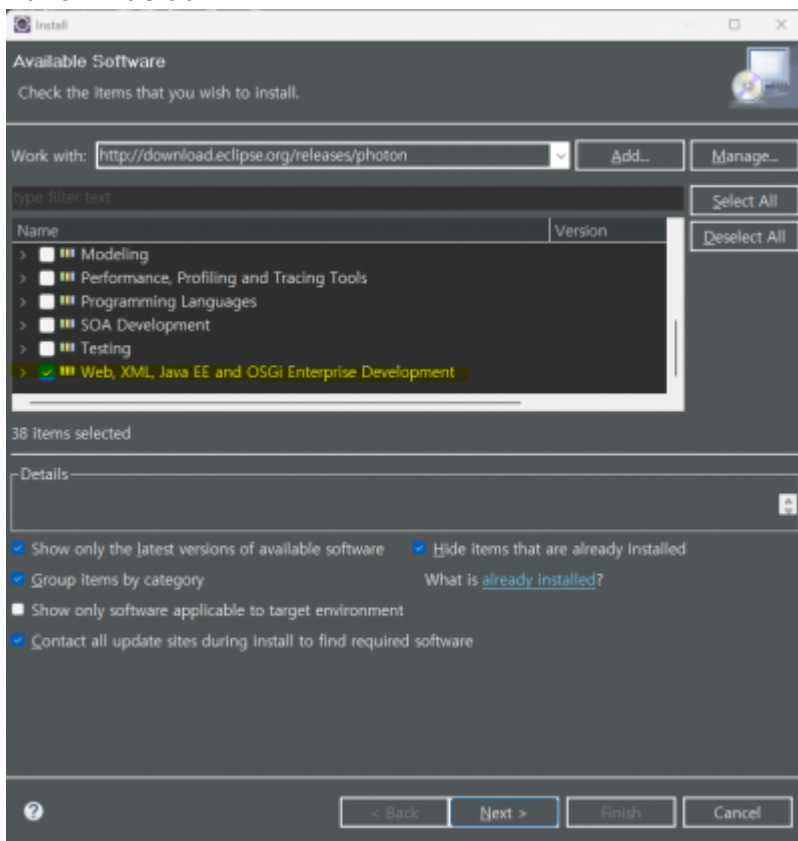
1. File types > Add > .js 가
2. Associated editors > Generic Text Editor > Default > Apply and Close

2. Help > Install New Software > Work with

- <http://download.eclipse.org/releases/photons>

- Web, XML, Java EE and OSGi Enterprise Development

- Window > Preferences > General > Editors > File Associations Associated editors - JavaScript Editor default



(2022.11.11.Fri - ocean)

### Ref Link

Eclipse

### Ref Link

- 1. [\[Eclipse\]workspace](#) (eclipse please choose another workspace as is currently in use)
- 2. [Workspace](#) - The default workspace is in use or cannot be create.

## Eclipse springboot class"

## "Error: Could not find or load main

- 1. [MAVEN Test](#)
- 2. [JRE System Library](#)

, , eclipse, , eleven, , , properties, , slaptear

From:

<http://125.132.25.164/dokuwiki/> -

- 2023.12

Permanent link:

<http://125.132.25.164/dokuwiki/doku.php?id=wiki:eclipse&rev=1673603053>

Last update: **2023/01/13 18:44**

