

Resin

- description : Resin
- author :
- email : dhan@repia.com
- lastupdate : 2020-06-04

Eclipse

1. resin

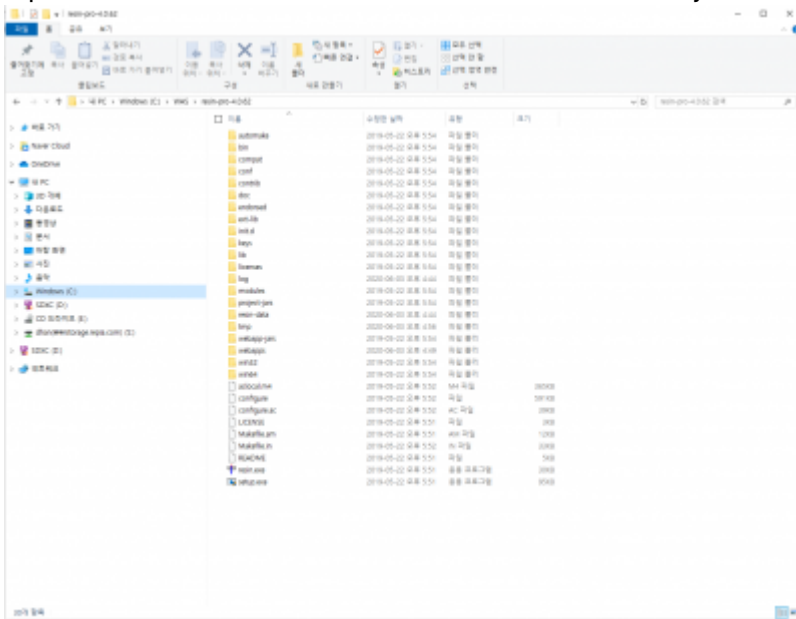
[resin download](#)

Resin Pro 4.0.x OS

2. resin

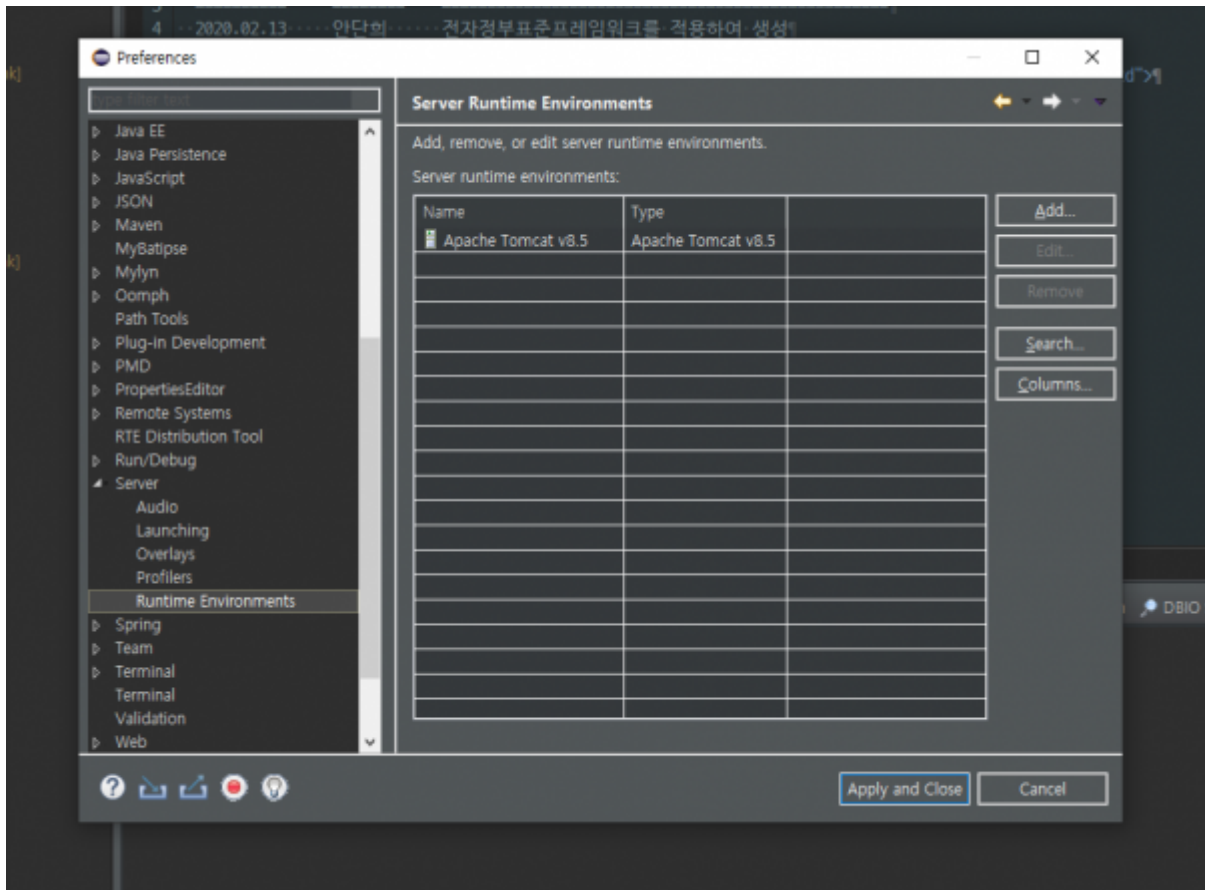
Tip: WAS

. (jboss, tomcat, weblogic, jeus, resin, ...)

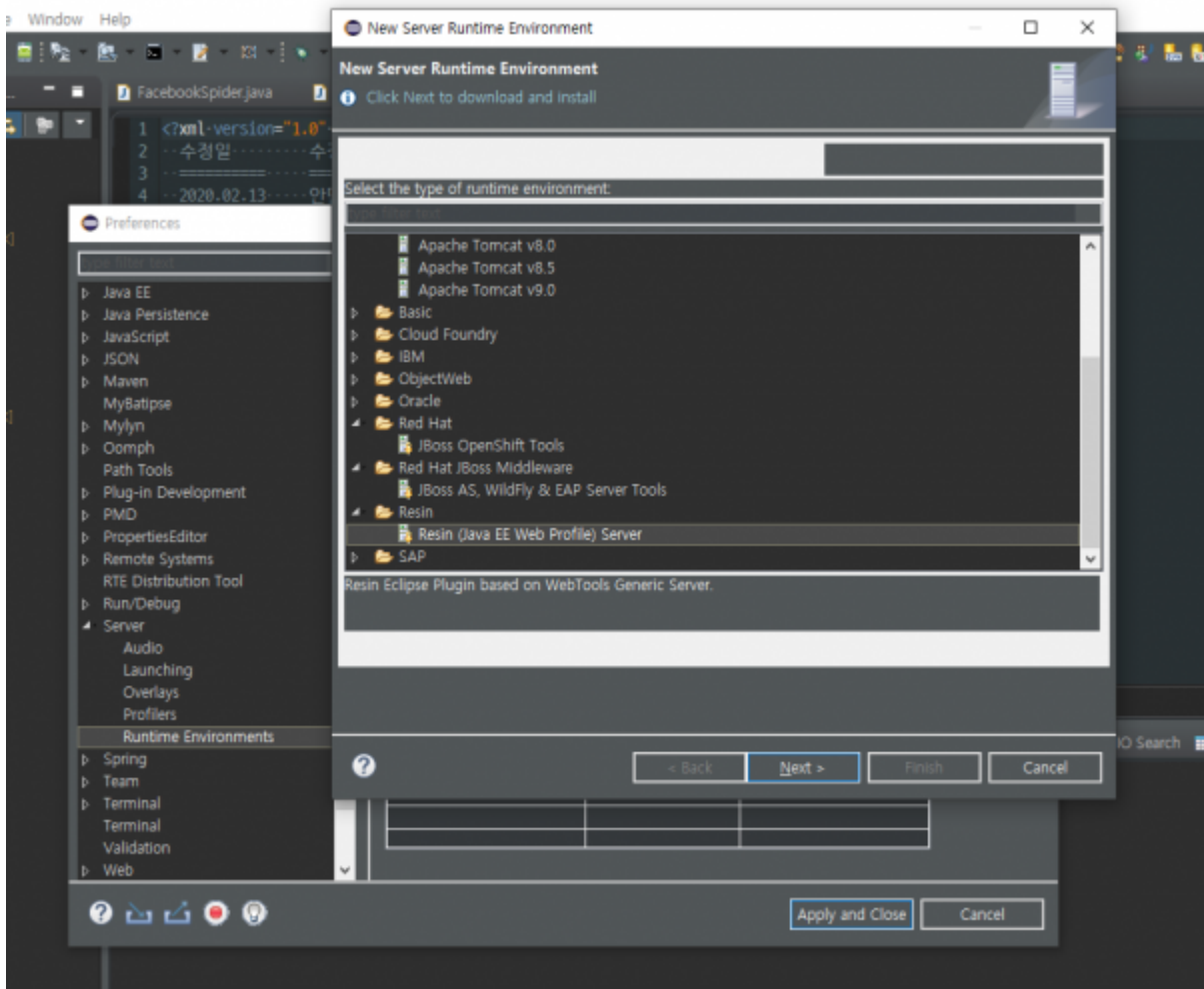


3. eclipse 가

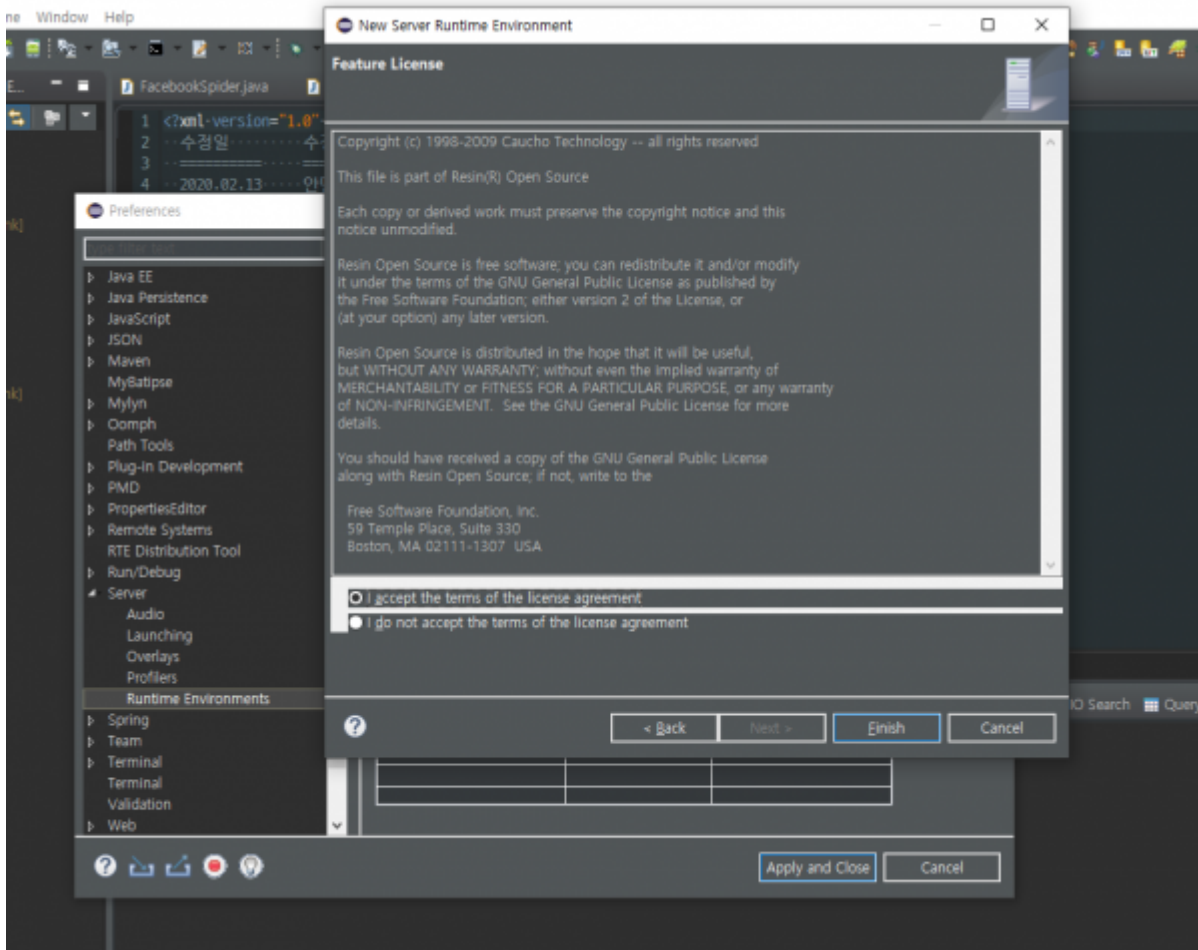
3.1 Window > Preferences → Server > Runtime Environments



3.2 Add...



3.3 Resin > Resin (Java EE Web Profile) Server > Next
I accept the terms of the license agreement Click & Finish



Jndi

jndi(Java Naming and Directory interface) // Was Server

```
<database>
  <jndi-name>jdbc/mysql</jndi-name>
  <driver type="com.mysql.jdbc.Driver">
    <url>jdbc:mysql://localhost:3306/database</url>
    <user>user</user>
    <password>password</password>
  </driver>
  <prepared-statement-cache-size>64</prepared-statement-cache-size>
  <max-connections>20</max-connections>
  <max-idle-time>30s</max-idle-time>
</database>

<database>
  <jndi-name>jdbc/oracle</jndi-name>
  <driver type="oracle.jdbc.pool.OracleConnectionPoolDataSource">
    <url>jdbc:oracle:thin:@127.0.0.1:1521:xe</url>
    <user>user</user>
    <password>password</password>
  </driver>
</database>
```

```
<connectionProperties>
  <SetBigStringTryClob>true</SetBigStringTryClob>
</connectionProperties>
</driver>

<prepared-statement-cache-size>64</prepared-statement-cache-size>
<max-connections>20</max-connections>
<max-idle-time>30s</max-idle-time>
</database>

<database>
  <jndi-name>jdbc/mssql</jndi-name>
  <driver type="com.microsoft.sqlserver.jdbc.SQLServerDriver">
    <url>jdbc:sqlserver:// 127.0.0.1:1433;DatabaseName=database</url>
    <user>user</user>
    <password>password</password>
  </driver>
  <prepared-statement-cache-size>64</prepared-statement-cache-size>
  <max-connections>20</max-connections>
  <max-idle-time>30s</max-idle-time>
</database>

<database>
  <jndi-name>jdbc/db2</jndi-name>
  <driver type="com.ibm.db2.jcc.DB2Driver">
    <url>jdbc:db2://127.0.0.1:50000/database</url>
    <user>user</user>
    <password>password</password>
  </driver>
  <prepared-statement-cache-size>64</prepared-statement-cache-size>
  <max-connections>20</max-connections>
  <max-idle-time>30s</max-idle-time>
</database>
```

```
<%@ page contentType="text/html; charset=utf-8" %>
<%@ page import="javax.naming.*, java.sql.*, javax.sql.*" %>
<%
String jndi = "java:comp/env/jdbc/mysql";
InitialContext ctx = new InitialContext(); // 가

DataSource ds = (DataSource)ctx.lookup(jndi); //

Connection conn = null;
Statement stmt = null;
ResultSet rs = null;

try
{
```

```
conn = ds.getConnection();
stmt = conn.createStatement();
rs = stmt.executeQuery("SELECT name, email, age FROM tb_user");
while(rs.next())
{
    out.println(rs.getString("name") + "<br>");
}

}
catch(Exception e)
{
    out.print(e);
}
finally //
{
    if(rs != null) rs.close(); rs = null;
    if(stmt != null) stmt.close(); stmt = null;
    if(conn != null) conn.close(); conn = null;
}
%>
```

Tip

Troubleshooting

Ref

(Resin)

[Java+Resin+Eclipse = JSP](#)

From:

<http://125.132.25.164/dokuwiki/> -
2023.12

Permanent link:

<http://125.132.25.164/dokuwiki/doku.php?id=wiki:eclipse:resin&rev=1591238423>

Last update: **2022/03/10 19:52**

