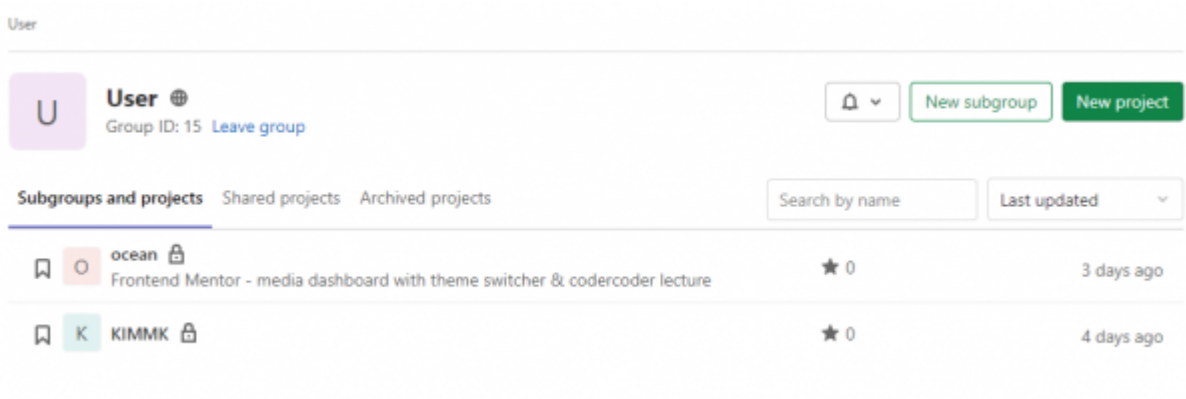


git

- description : Eclipse git
- author :
- email : repia@repia.com
- lastupdate : 2021-09-06

eclipse git

1. GitLab



- new project

Create new project

The screenshot shows three options for creating a new project:

- Create blank project**: Create a blank project to house your files, plan your work, and collaborate on code, among other things.
- Create from template**: Create a project pre-populated with the necessary files to get you started quickly.
- Import project**: Migrate your data from an external source like GitHub, Bitbucket, or another instance of GitLab.

You can also create a project from the command line. [Show command](#)

- Create blank project

New project · Create blank project

Project name

Project URL **Project slug**

Want to house several dependent projects under the same namespace? [Create a group.](#)

Project description (optional)

Visibility Level ⓘ

Private
Project access must be granted explicitly to each user. If this project is part of a group, access will be granted to members of the group.

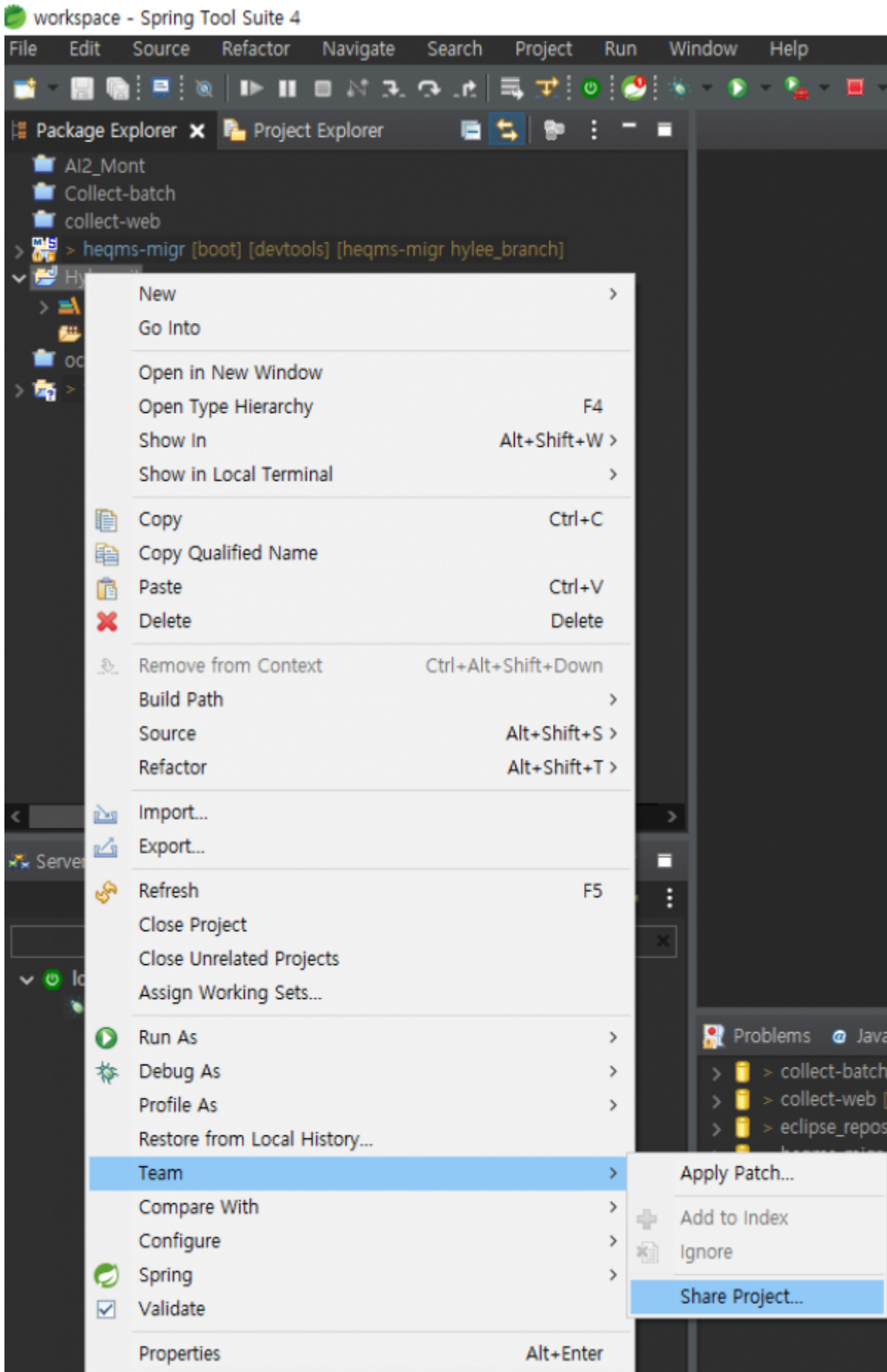
Internal
The project can be accessed by any logged in user except external users.

Public
The project can be accessed without any authentication.

Initialize repository with a README
Allows you to immediately clone this project's repository. Skip this if you plan to push up an existing repository.

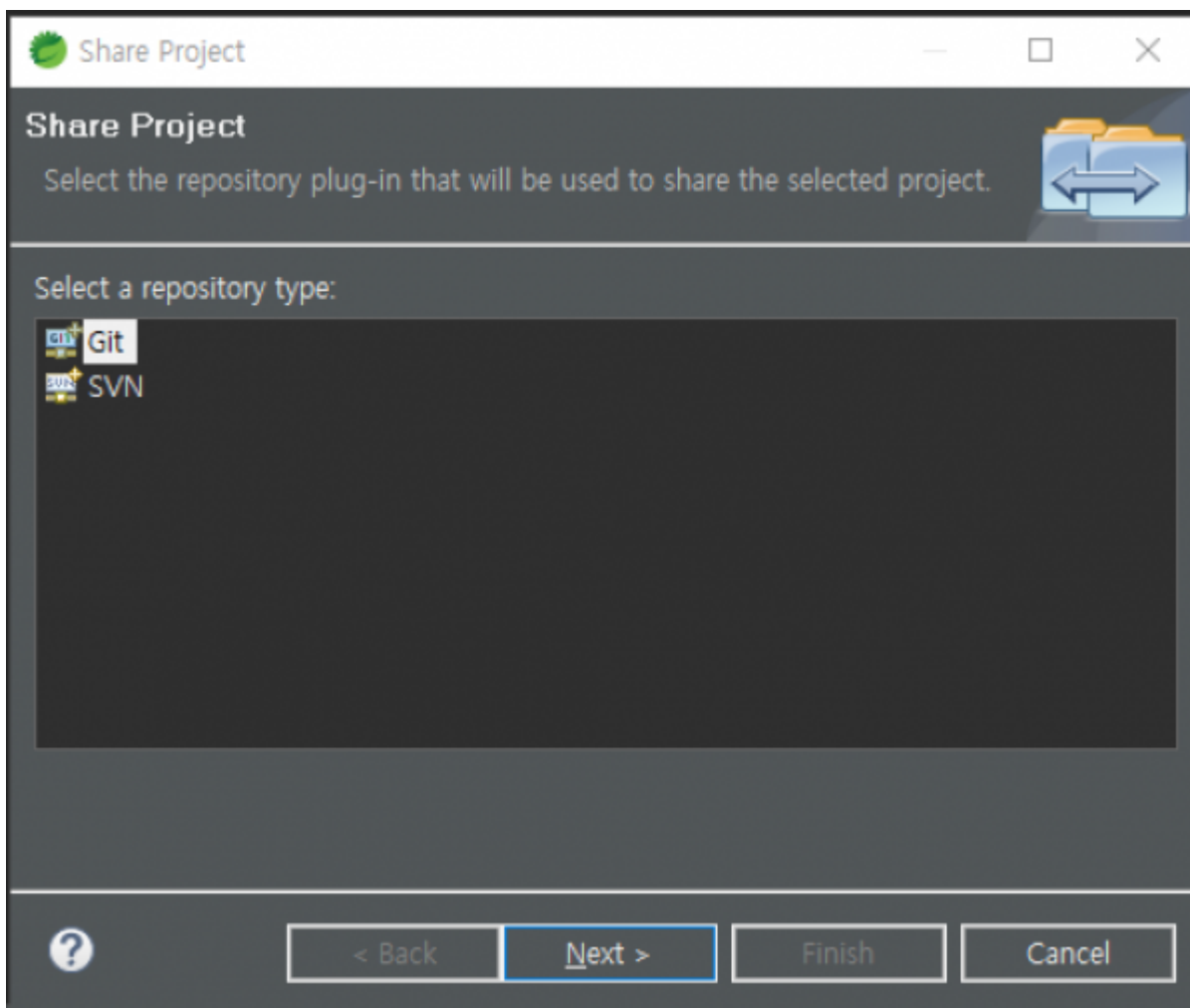
- Project name Create project

2. eclipse GitLab

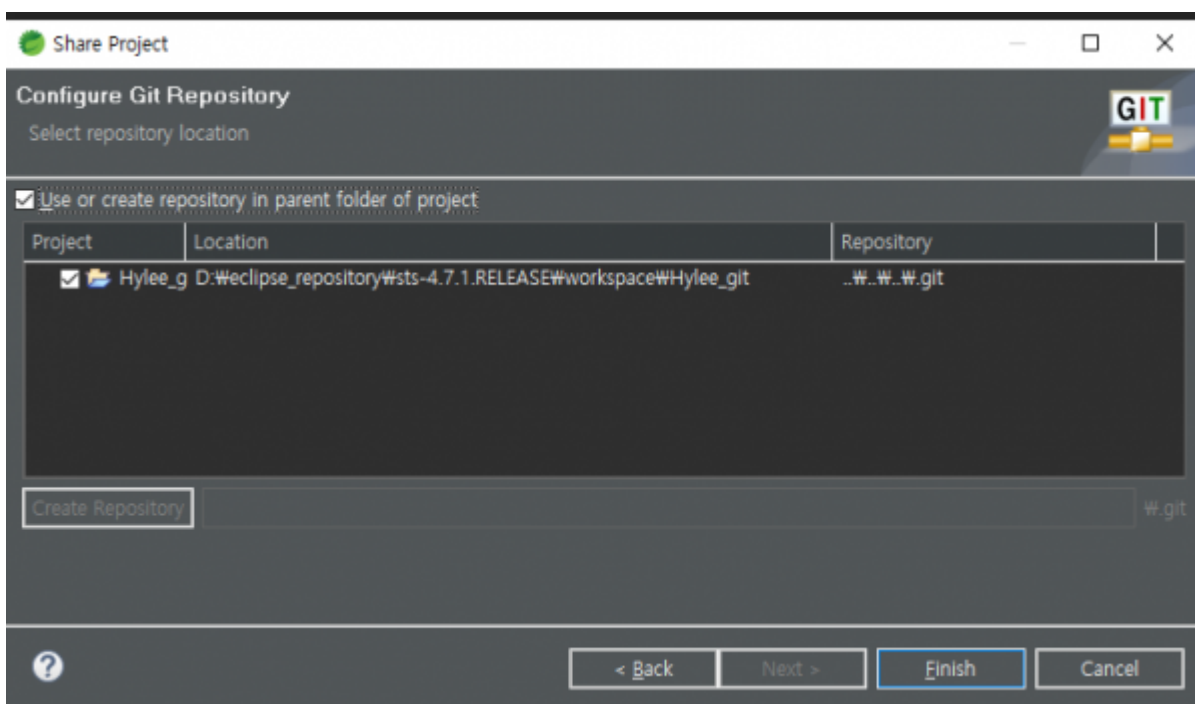


- GitLab

Team > Share Project

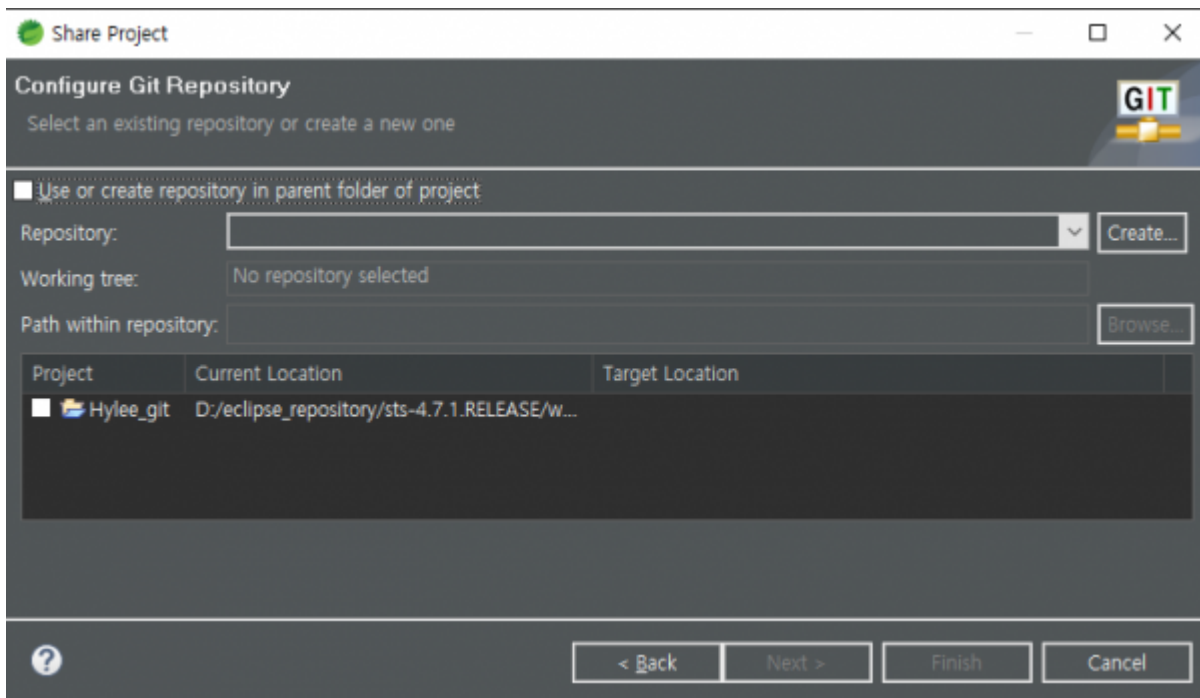


- Git > Next



- Git
- Use or create repository in parent folder of project

•



•

, [git](#), [eclipse](#)

From: <http://125.132.25.164/dokuwiki/> -

. - 2023.12

Permanent link: <http://125.132.25.164/dokuwiki/doku.php?id=wiki:eclipse:git%EC%97%B0%EB%8F%99&rev=1630918958>

Last update: **2022/03/10 19:52**

