

AI

- * BERT
- * ELMo

/ ()

Coursera [by Andrew Ng](#)
 /
 Neural Networks

Machine Learning



Terms

1. [Artificial Intelligence(), AI] :

- Narrow AI (AI) : AI
- General AI (AI) : AI

2. [Machine Learning, ML,] :

- ' (explicit programming)' , AI
- , ,
- ,
- (explicit programming) : ,
- _____ : DNN ,

- _____ : , , (가 ,)

3. [Deep Learning, Deep Structured Learning,] :

- (Neural Network)
- (Layer) 가
- 가 , Deep 가 .
- (Unit)
 - (Dendrites,)
 - (Myelin Sheath,)
 - (Cell Nucleus,)
 - (Axon,)
 - 가 (Axon terminals,)

4. ANN [Artificial Neural Network(),]

-

5. DNN [Deep Neural Network]

- ANN 가 ,

6. CNN [Convolution Neural Network(),]]

-
-
-
-

7. RNN [Recurrent Neural Network(,)]

- Weight , ,

8. Classification (,)

- supervised learning(,)

9. Bias (,)

- Intercept,

10. Clustering (,)

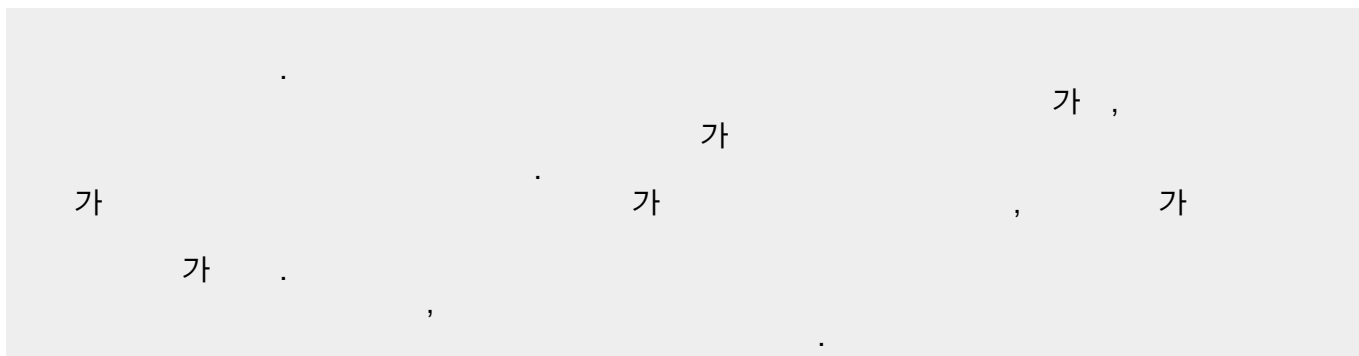
- unsupervised learning(,)

11. Matrix (,)

- [Matrix multiplication](#)

12. Feature (,)

- 13. Regression (,)
- 14. Category (,)
- 15. Entropy vs Cross Entropy (,)



> : (<http://www.aitimes.kr>)

- 16. Backpropagation (,)

-

- 17. Logistic regression → Binary Classification → 0 or 1

Linear regression 0 or 1 가

- 18.
- 19.

Y : real data,
Y hat :

- 20. Hyperplane

Hyperplane n n-1 .
 (1 ...)
 (2)
 3 (0)
 (1)
 (2)
 ==> Classification

Ref

What are the benefits of white-box models in machine learning?

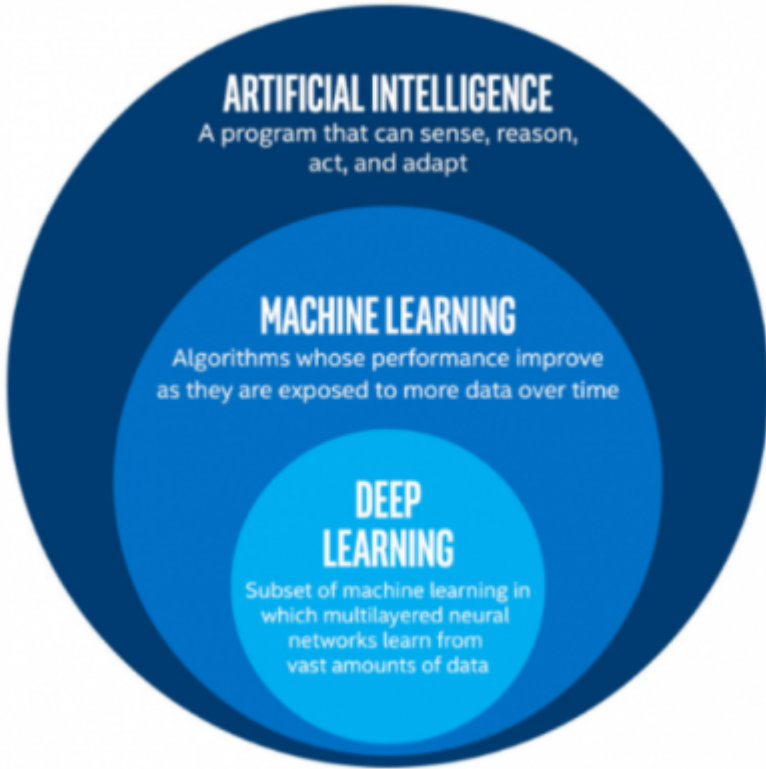
: AI --
 , AI

가?
 [JANN, DNN, CNN, RNN

(Deep Learning) 😊

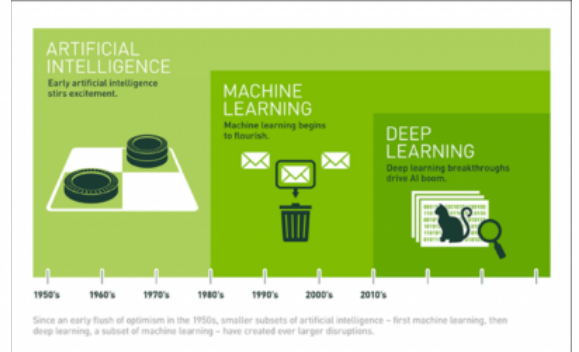


Image



인공지능 & 머신러닝 & 딥러닝

, , ai, 2013



Since an early flash of optimism in the 1950s, smaller subsets of artificial intelligence - first machine learning, then deep learning, a subset of machine learning - have created ever larger disruptions.

From:

<http://125.132.25.164/dokuwiki/> -
- 2023.12

Permanent link:

<http://125.132.25.164/dokuwiki/doku.php?id=wiki:ai:ai&rev=1594799505>

Last update: **2022/03/10 19:52**

